



"Dry Prairie Rural Water is committed to delivering clean, affordable and dependable drinking water that will improve the quality of life and create economic opportunities throughout northeast Montana."

P.O. Box 577
Culbertson, MT 59218

Phone: 406-787-5382
Fax: 406-787-5392

Dear Landowner:

Dry Prairie has bid out the *Opheim Mainline Project*, in Valley & Daniels County. The mainline will consist of 61 miles of 8" pipe, two ground storage reservoirs, and a series of 4 four pump stations. The project will connect to the existing pipeline along Hwy 24 at St. Marie and continue north for 33 miles to the Town of Opheim, and then head east for 28 miles towards Glentana, Richland and Peerless. There will not be any individual service connections with the mainline project, they will be solicited as part of the *Opheim Branch Line Project* at a later date.

Part of the planning includes obtaining the necessary water pipeline easements from landowners whose property the pipeline will cross. We are grateful for the tremendous support that landowners have demonstrated for all past projects by providing the required easements that allow continued construction progress of this vital regional water project.

As part of finalizing the construction plans there will be several consultants working to complete the pipeline routing, as well as wetland and cultural inventories. We want to make you aware that you may see them in your area over the next several months as they complete their reviews.

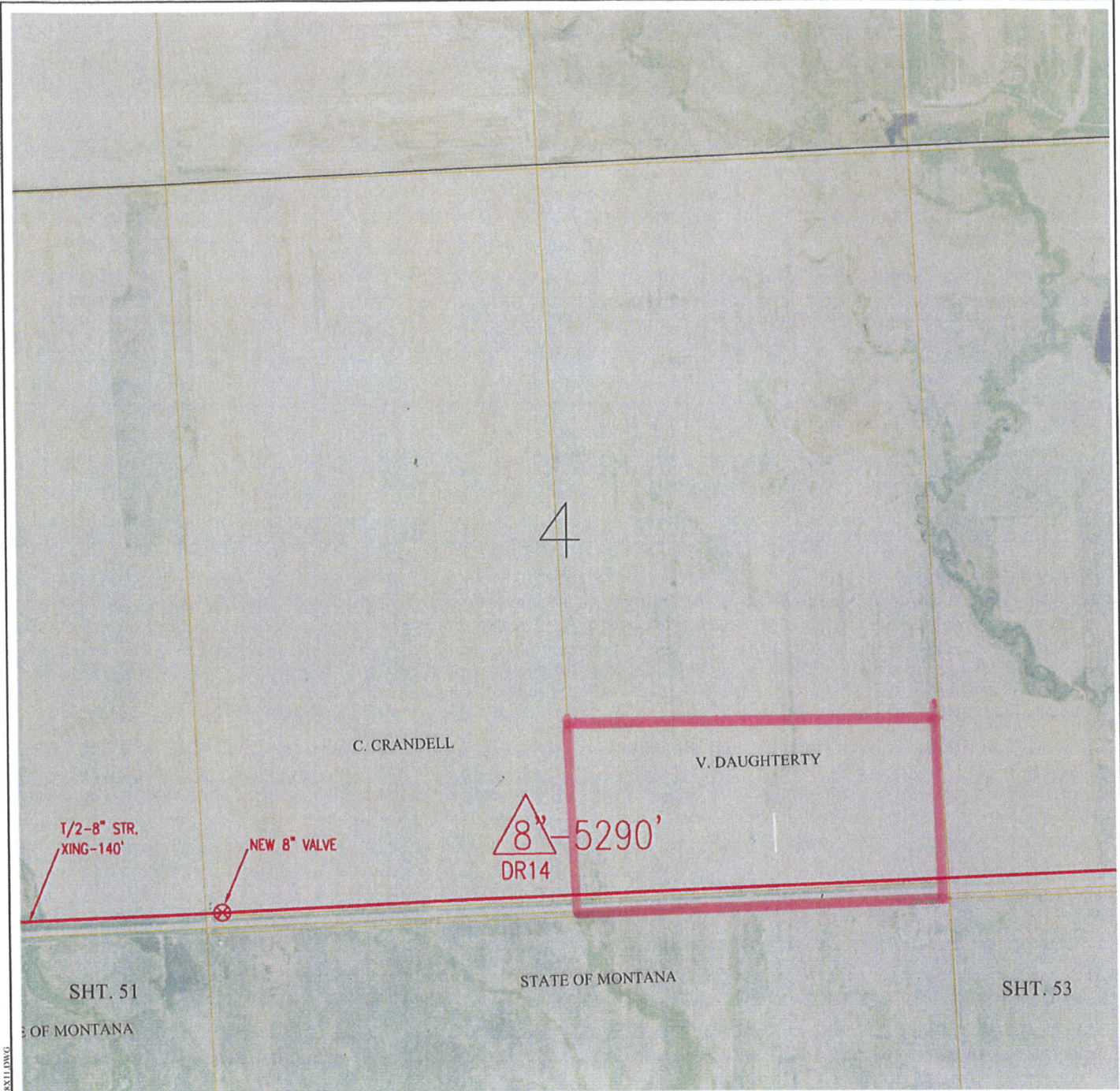
Please call Heather Robertson at 406-787-5382 if you have questions regarding this project.

Sincerely,

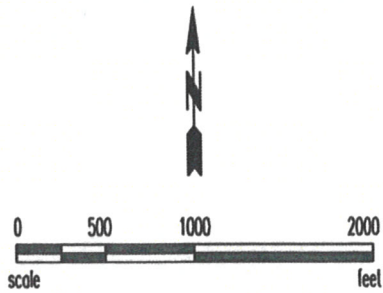
Joni Sherman

Joni Sherman
General Manager

Plot Date: 7/17/2011 3:54 PM



P:\06\04\02\OPHEIM MAINLINE.DWGSS\OPHEIM\ST.M. MAINLINE_RK11.DWG



T 35 N
 R 44 E
 Sec. 4

REV	REV	REV



Project Manager: EUS
 Designer: JKV
 Project Number: 803432
 Phone: (712) 472-2531

DRY PRAIRIE RURAL
 WATER AUTHORITY
 CULBERTSON, MONTANA

OPHEIM MAINLINE PROJECT

SHEET
52